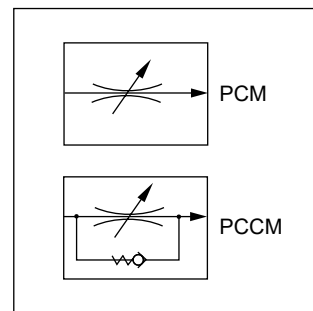
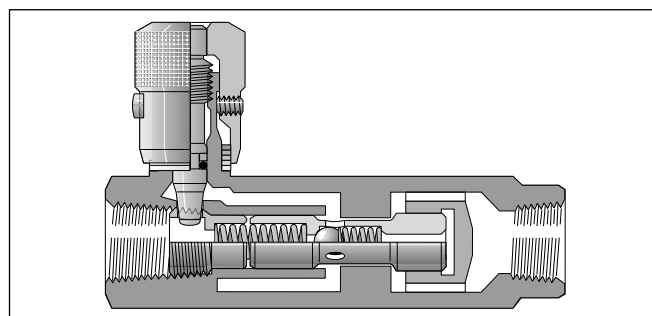


Manatrol 2 way flow control valves for pressure compensated regulation of the flow rate. As a consequence of pressure changes, the set value can vary by  $\pm 5\%$  within the tolerance range. Viscosity changes have the same effect and must be observed.



**Technical data**

Size	Max. press. [bar]	Flow control		Check valve		Weight [kg]
		Q* [l/min]	$\Delta p$ [bar]	Q <sub>max</sub> [l/min]	$\Delta p$ [bar]	
<b>400</b>	210	1 - 10	7	20	3	0.82
<b>600</b>	210	2 - 25	7	30	3	1.05
<b>800</b>	210	6 - 60	11	75	8	1.68
<b>1200</b>	210	10 - 100	11	130	8	3.64
<b>1600</b>	210	19 - 190	11	250	10	6.59



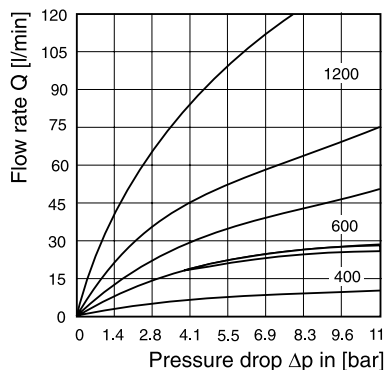
**Ordering code**

<input type="checkbox"/>	<b>PC</b>	<input type="checkbox"/>	<b>M</b>	<input type="checkbox"/>	<b>S</b>	<input type="checkbox"/>	<input type="checkbox"/>	<input type="checkbox"/>
Thread type	Press. comp. flow control valve	Design		Thread size	Steel body	Clamping screw	Seal	Design series (not required for ordering)
Code	Thread	Code	Design	Code	Seal	Code	Clamping screw	Code
omit	NPTF	omit	<b>Without check valve</b>	omit	<b>NBR</b>	omit	<b>Hexagon socket</b>	omit
<b>9</b>	<b>BSP</b>	C	With check valve	<b>400</b>	<b>FPM</b>	F	With knurled knob	T <sup>1)</sup>
				<b>600</b>				
				<b>800</b>				
				<b>1200</b>				
				<b>1600</b>				

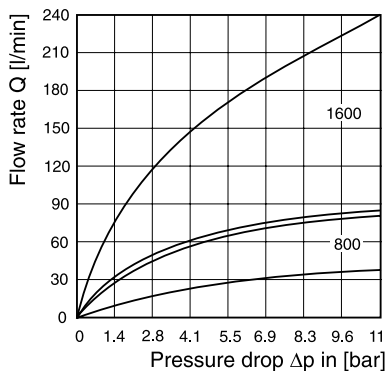
**Bold letters = Short-term availability**

\* Min. and max. flow rate  
1) Only for size 400 to 1200

**Δp/Q curves**

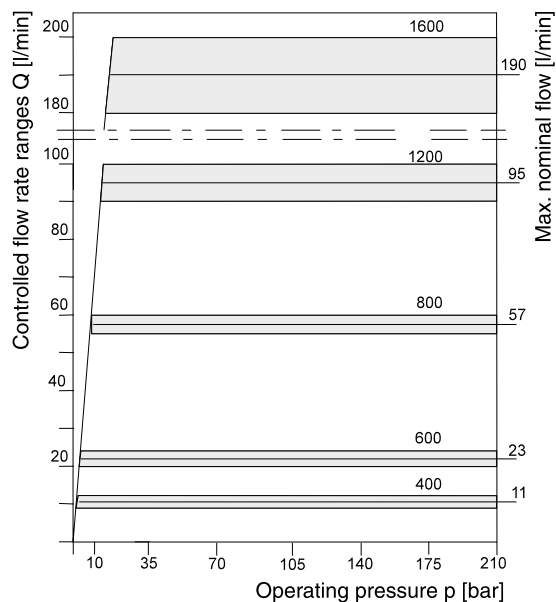


Sizes 400, 600 and 1200:  
 Pressure drop  $\Delta p$  for flow through check valve in range  $Q_{max} / Q_{min}$  with each size



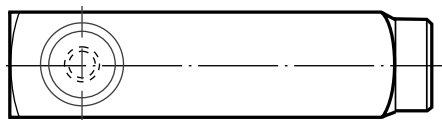
Sizes 800 and 1600:  
 Pressure drop  $\Delta p$  for flow through check valve in range  $Q_{max} / Q_{min}$  with each size

**Size 400 - 1600 p/Q control characteristic**

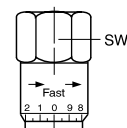
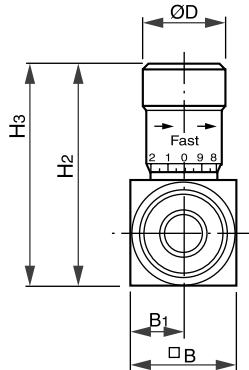
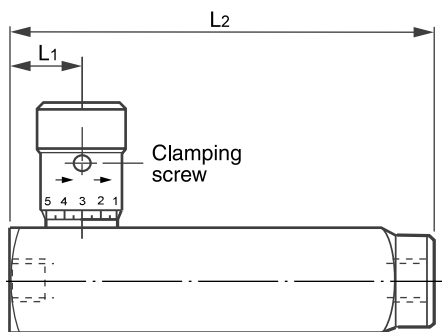


All characteristic curves measured with HLP46 at 50 °C.

**Dimensions**

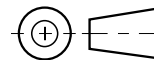


← Direction for controlled flow



Hexagon adjusting knob, standard for size 1600

H2 = closed  
 H3 = open



Size	R*	H3	H2	B	L1	B1	L2	ØD	SW
400	¼	69	64	35	16	18	92	21	-
600	⅜	80	74	38	18	19	106	25	-
800	½	103	95	44	22	22	125	30	-
1200	¾	128	116	57	28	29	149	35	-
1600	1	175	158	70	33	35	176	-	47.8

\* Pipe thread G or NPTF